



VM-3000VA/E FIRMWARE VERSION 2.0 UPDATE PROCEDURE

TABLE OF CONTENTS

1. Current Firmware Version Check Procedure	2
2. Firmware Update Procedure	4
3. German Language Text Data Update Procedure (for the VM-3000VA LCD)	8

VM-3000VA represents VM-3240VA and VM-3360VA, VM-3000E represents VM-3240E and M-3360E in this procedure manual.

Notes

- The firmware version of each VM-3000VA/E should be the same in the whole system.
- Update the VM-3000VA and VM-3000Es one by one with a web browser accessing each IP-Address.
- In the case of knowing all the VM-3000VA /Es' versions are older than 2.0, skip the 1st procedure and directly go to the 2nd procedure.
- Without using the VM-3000VA LCD screen in German Language, the 3rd procedure is not necessary.

1. Current Firmware Version Check Procedure

Shown below is the current firmware version check procedure.

Step 1-1. Prepare following devices and cables.

Switching hub (Recommended: 100BASE-T or faster)

PC (Windows XP / Internet Explorer 6 or later)

CAT5-STP cables (at least 2 cables)

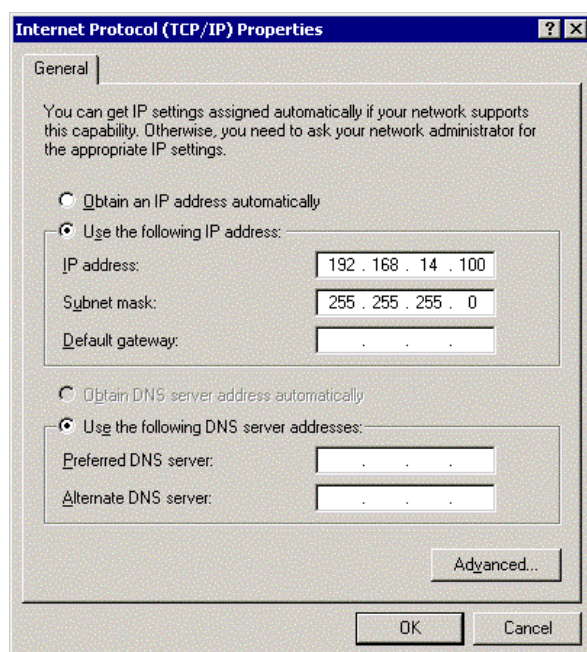
Step 1-2. Connect the PC to the VM-3000VA/E's rear LAN connector via the switching hub with CAT5-STP cables.

Step 1-3. Change the PC network settings as follows :

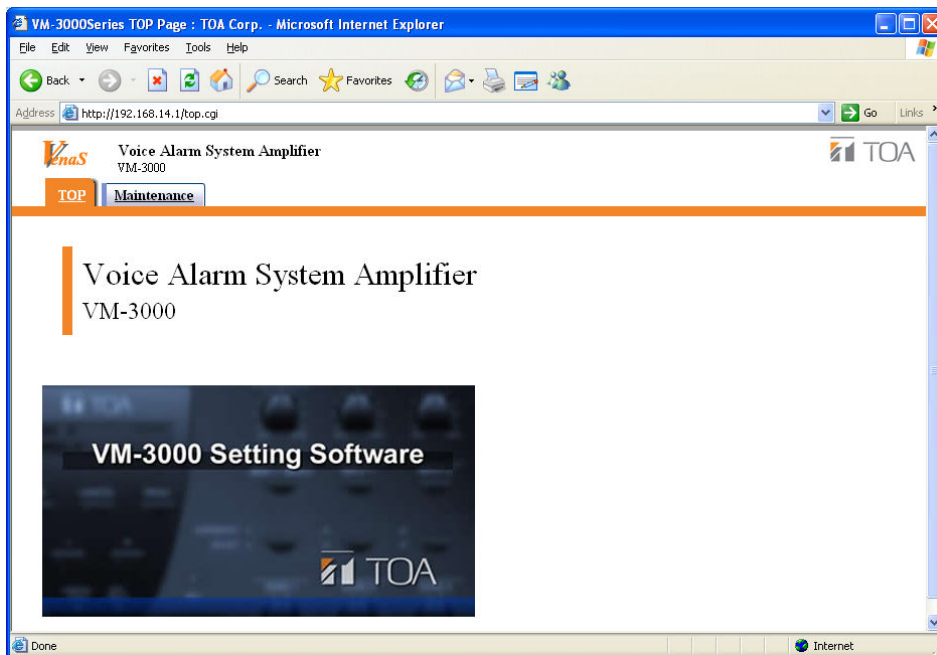
IP address : 192.168.14.xxx (for example, 192.168.14.100)

Subnet mask : 255.255.255.0

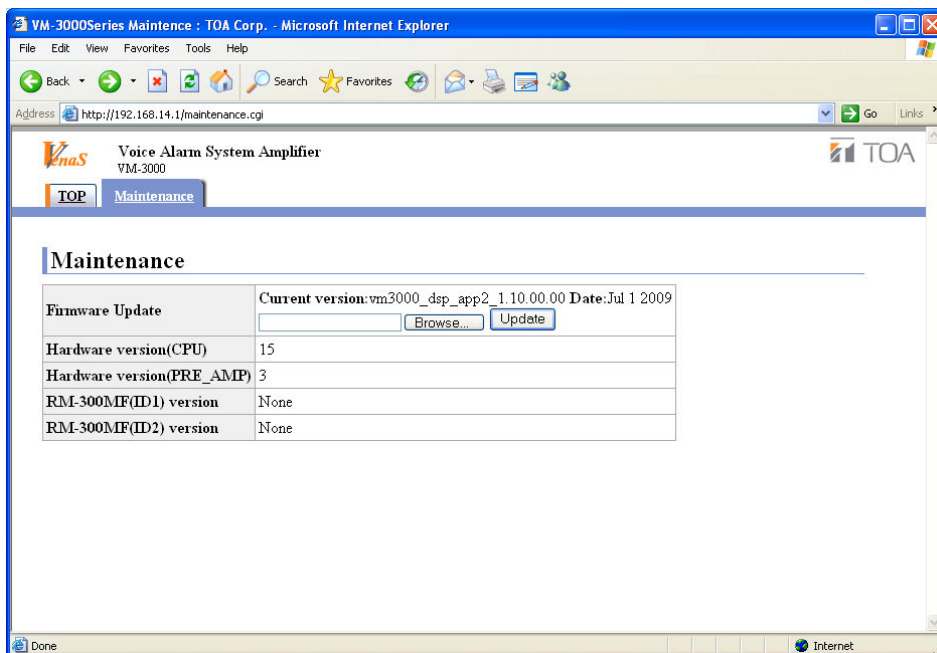
If the VM-3000s' IP addresses is out of 192.168.14.xxx group, change the PC's IP address to be within the same address group.



Step 1-4. Start up the web browser, and access to the address of the VM-3000 (Default : <http://192.168.14.1/>), then the following page will be displayed.



Step 1-5. Click the “Maintenance” tab and confirm the current firmware version on the screen. then the following page will be displayed.



Step 1-6. Access to the address of the next unit (for example <http://192.168.14.2/>) and go back to **Step 1-4** until all units have been checked in the whole system.

2. Firmware Update Procedure

Notes

- The firmware of the VM-3000VA and that of the VM-3000Es are the same software.
- The firmware version of the VM-3000VA and VM-3000Es should be the same in the whole system, so update them one by one with a web browser accessing each IP-Address.

Shown below is the firmware update procedure.

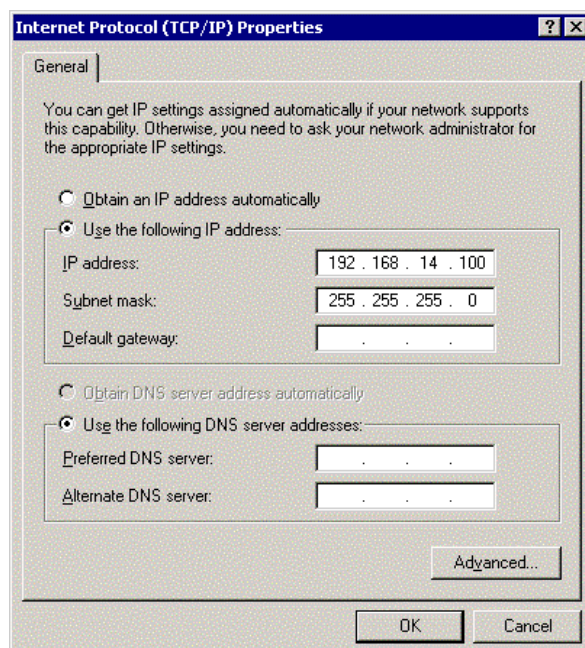
Step 1-1. Prepare the following firmware file (compressed with this manual) from the TOA web site.
vm3000_dsp_app2_x.xx.xx.xx_ram.bin.dat

Step 1-2. Prepare following devices and cables.
Switching hub (Recommended: 100BASE-T or faster)
PC (Windows XP / Internet Explorer 6 or later)
CAT5-STP cables (at least 2 cables)

Step 1-3. Connect Connect the PC to the VM-3000VA/E's rear LAN connector via the switching hub with CAT5-STP cables.

Step 1-4. Change the PC network settings as follows :
IP address : 192.168.14.xxx (for example, 192.168.14.100)
Subnet mask : 255.255.255.0

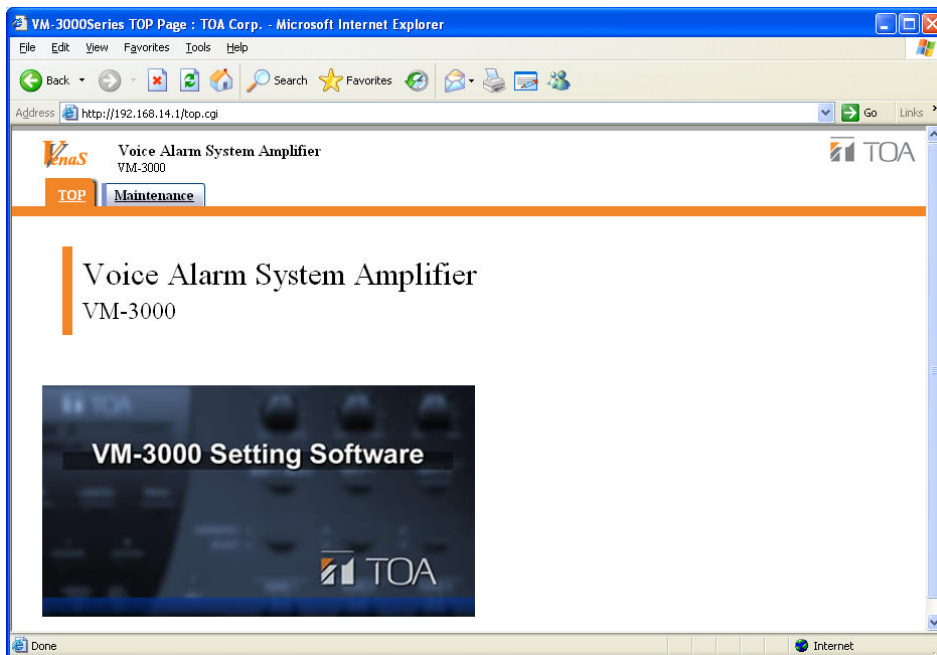
Using the VM-3000s' IP addresses out of 192.168.14.xxx group, change the PC's IP address to be within the same address group.



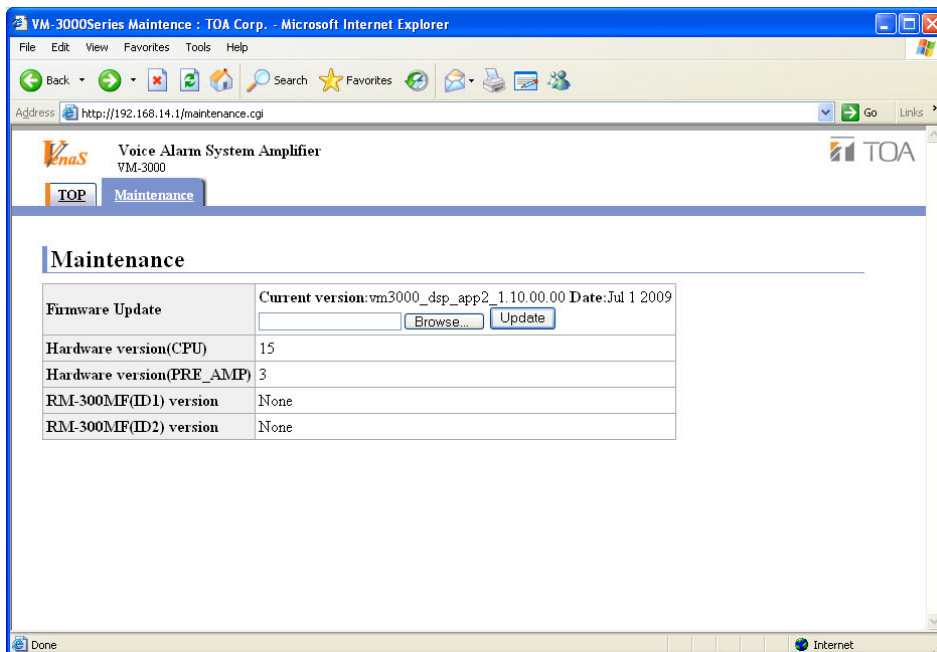
Step 1-5. Set each dip switch on the rear panels of the VM-3000VA/Es as follows :

Dip switch No.7 ---- ON : Firmware update mode
Turn on the power of VM-3000VA/Es.

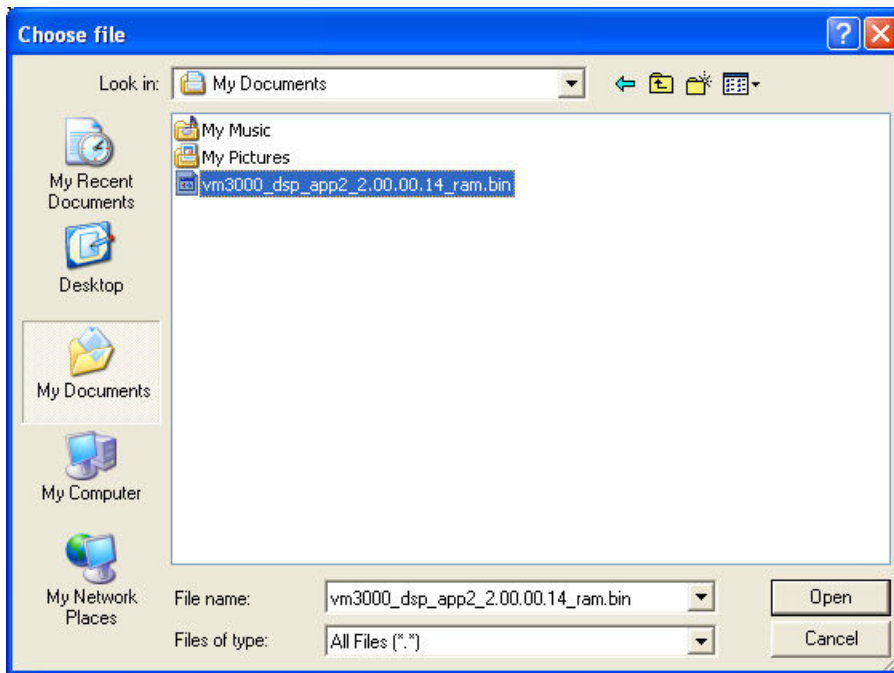
Step 1-6. Start up the web browser and access to the address of the VM-3000 (Default : <http://192.168.14.1/>), then the following page will be displayed.



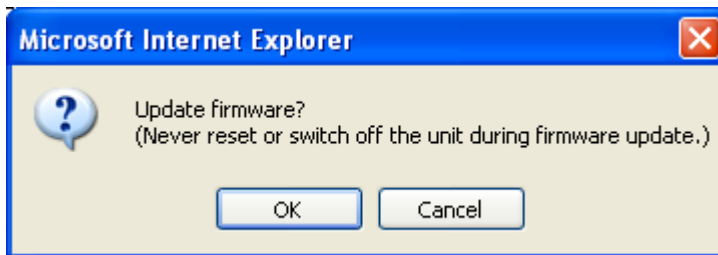
Step 1-7. Press the “Maintenance” tab and confirm the current firmware version on the screen.



Step 1-8. Click the “Browse” button, then the following dialog window will be shown.
Select the firmware file named “vm3000_dsp_app2_x.xx.xx.xx_ram.bin.dat”.

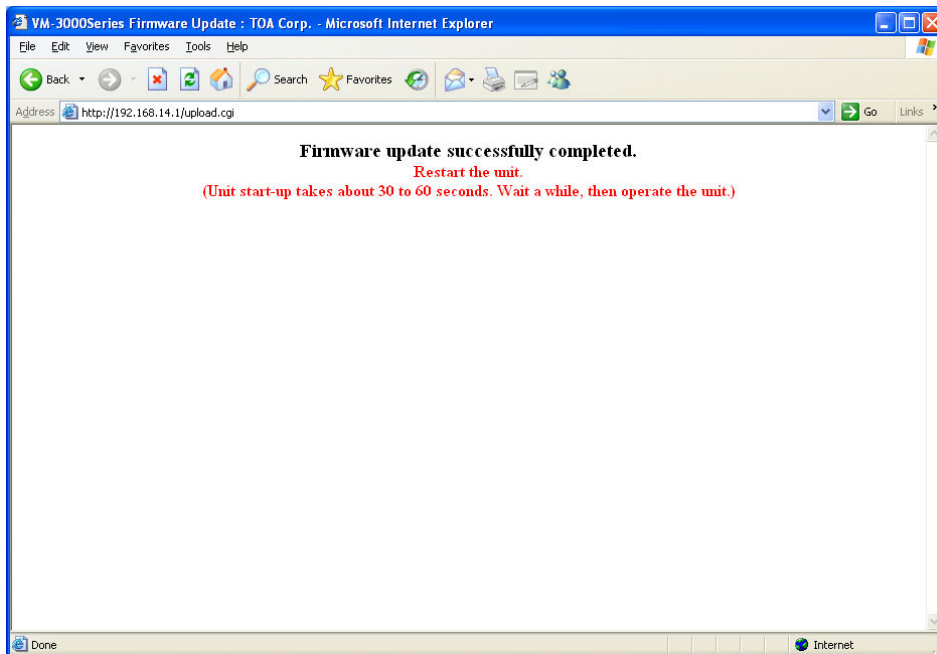


Step 1-9. Push the “OK” button on the dialog window below to proceed the firmware update.

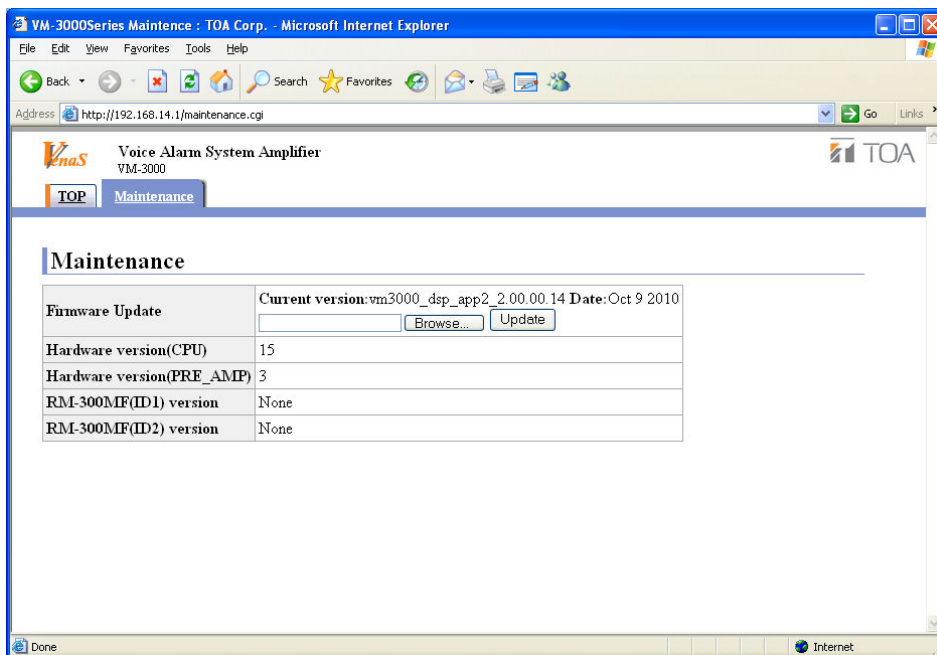


Step 1-10. The firmware will be transmitted to the VM-3000.

After finishing the transmission, the complete dialog will come on the PC screen, then the VM-3000 will be restarted automatically.



Step 1-11. After the unit has rebooted correctly, access to it's address (Default : <http://192.168.14.1/>). To verify the firmware update, check the "Current version" on the screen.



Step 1-12. Access to the address of the next unit (for example <http://192.168.14.2/>) and go back to **Step 1-6** until all of the units have been updated in the whole system.

Step 1-13. Set each dip switch on the rear panels of the VM-3000VA/Es as follows :

Dip switch No.7 ---- OFF : Firmware update mode

Turn off and on the power of All the VM-3000VA and VM-3000Es.

3. German Language Text Data Update Procedure (for the VM-3000VA LCD)

Notes

- This chapter explains the procedure to obtain the latest German language text data on the VM-3000VA.
- This update is not necessary when the firmware of version 2 is already pre-set by the factory.
Before updating the VM-3000VA with the German text, make sure that the firmware of version 2 is installed.
- The update requires the following three files: "LANG_01.VM3" and the folders "Init1" and "Init2", each containing the file "Init.txt". These can be downloaded from the TOA download site <http://www.toa-products.com/international/> in a zip file.

Shown below is the German Language Text Data Update Procedure.

Step 1-1. Connect your PC with the VM-3000VA's LAN port through an Ethernet switch and supply power to the VM-3000VA.

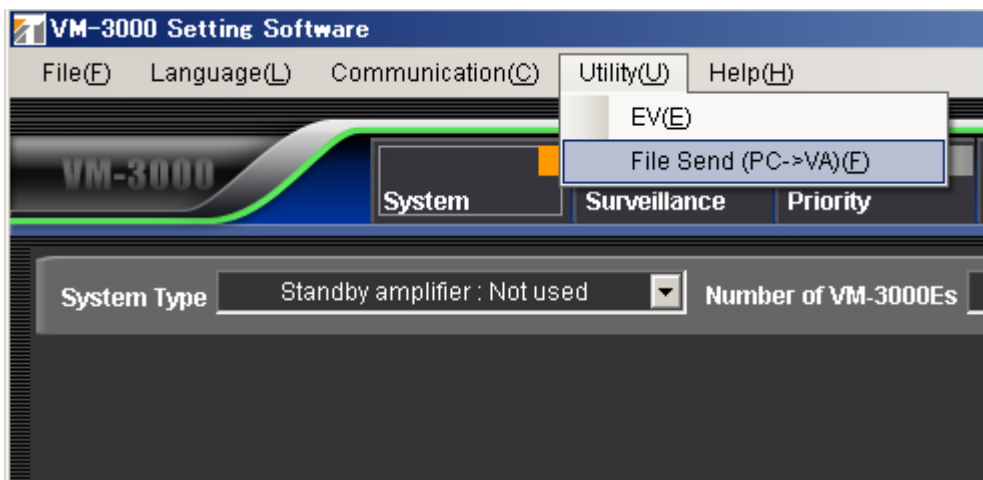
Step 1-2. Open the program folder containing the software of version 2 (if not selected otherwise during the installation process, then it should be: "C:\Programme\TOA Corporation\VM3000\VM3000 Setting Software").

Step 1-3. Overwrite the file "Init.txt" in the program folder with the file contained in the folder "Init1".

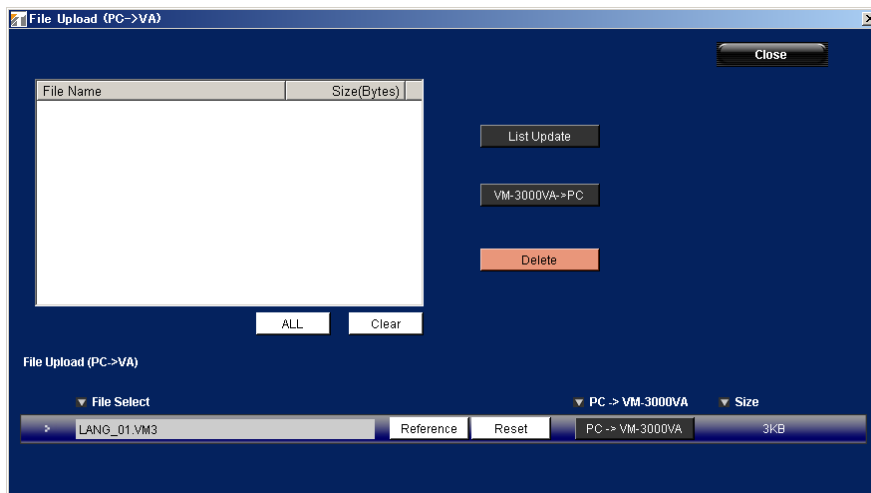
Step 1-4. Start the VM-3000 setting software of version 2.

Step 1-5. Eventually set the IP address to match with that of the connected VM-3000VA.

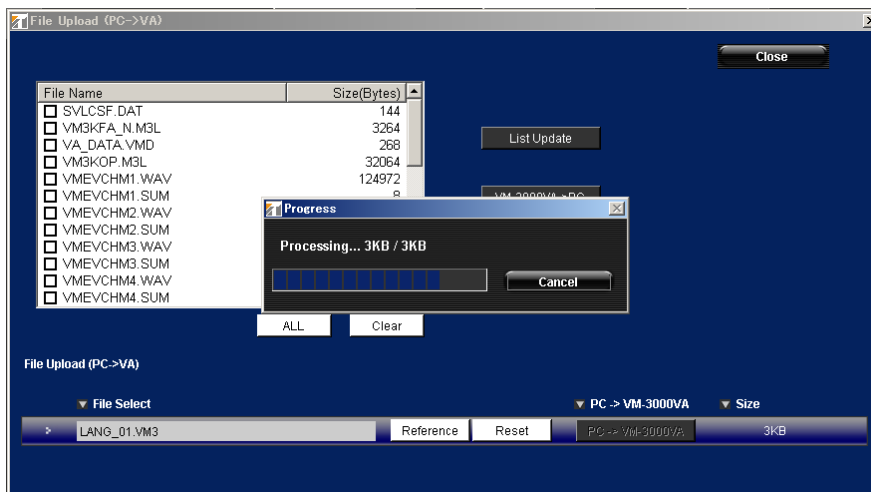
Step 1-6. Click the "Utility" menu and select "File Send (PC->VA)".



Step 1-7. When the "File Upload" picture comes on, push the "Reference" button and choose the file named "LANG_01.VM3" from the uncompressed "LCD(German)".



Step 1-8. The "Progress Dialog" is shown during the data transfer process. Wait until the "Progress Dialog" closes automatically.



Step 1-9. Push the reset button (next to the power switch) of VM-3000VA. After selecting the German language display of the menu "Information", the LCD screen shall show "HINTERGRUNDMUSIK".



Step 1-10. Exit the VM-3000 Setting Software.

Step 1-11. Overwrite the file "Init.txt" in the program folder with the "Init.txt" file of the folder "Init2".

Step 1-12. Start the "VM-3000 Setting Software" again and make sure that the "Utility" menu does not have the selection for "File Send (PC->VA)" any more.

